

INNOVATION



TECHNOLOGY



INTEGRATED
MANAGEMENT
SYSTEM



HSEQ



COMMITMENT

 **Petreven**



Petreven, an innovative way to drill efficiently and safe

Petreven is a drilling contractor (established in 1998) with the experience and reputation for providing integrated services in today's oil and gas sector.

The Company, being a part of Trevi Group, has a solid background in drilling rig design, engineering and management.

The main objective of Petreven is to provide drilling services in those areas where the use of our technology and expertise will contribute to the improvement of drilling performance, cost reduction, high safety standards and environmental preservation.

Our strategy is to develop unique projects through teamwork along with our Clients in order to achieve the design of a **"fit for purpose"** drilling rig, able to enhance productivity and to add value to the field of operations.



VISION

To be the technological partner of excellence in the Geothermal, Oil & Gas drilling industry

COMMITMENT AND KEYS

Our People and Management are strongly committed in providing our Clients with the best services and to ensure excellence through QHSE management. The KEY to our success is the integration of Technology with highly prepared and motivated human resources. The synergy with Drillmec and the utilization of the Hydraulic Drilling Rigs have been the additional value to the innovative way of work and have permitted to obtain high performance and high safety standard during the drilling operations.



PARTS OF STRONGLY DIVERSIFIED ROOTS

Petreven is a low impact drilling contractor established in 1998 in Venezuela benefiting from the Trevi Group's solid background in ground engineering and drilling rig manufacturing.

TECHNOLOGY

Our Rigs are innovative drilling rigs, which meet all technological requirements of the oil & gas field.

Thanks to their design, technical features and assets, these rigs are an integrated drilling system that reduces drilling cost through **technological innovation and minimize the environmental impact** with the complete mud collection points under all critical areas.

These rigs require a **smaller footprint, minimize noise and produce fewer wastes.** Moreover, with automation, these rigs achieve high standards of safety.

The integrated top drive guarantees advanced performance in terms of ROP and connection time. All loads are wheeled and self-erecting, ensuring fast movement between locations and preventing accidents during transport.

The HH series reduces mobilization and transportation costs diminishing the weight, the number of pieces involved and the use of crane.

Customer satisfaction is our focus, with the goal of reducing drilling costs, minimizing environmental impact and ensuring good safety standard. We are able to provide a fully integrated service of rig management, rig customizing, rig engineering and design, technical assistance and maintenance with in-house spare parts.



We have achieved this goal through:

- **Fast Movement**
- **Reducing Footprint**
- **Increasing Automation**
- **Reducing The Workforce**
- **Reducing Noise**
- **Anti-Pollution System**
- **Integrated Services**



Petreven has equipped its fleet with innovative automatic hydraulic drilling rigs; units that have proven their capabilities under a wide range of climatic conditions, from the Desert of Perú to the 4600 m.s.l. in the Chilean Andes.

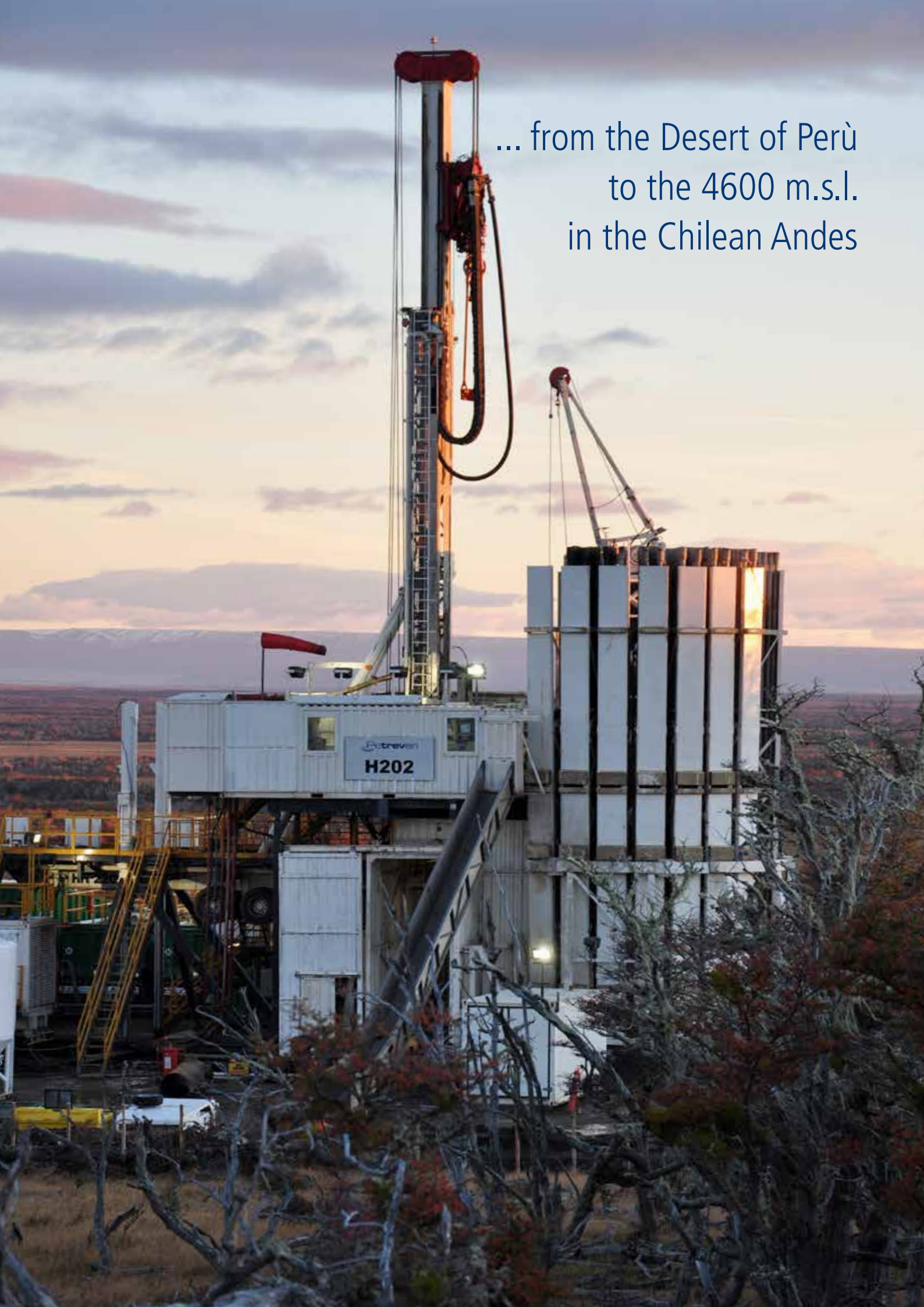
RIGS FLEET

Petreven has achieved successful results in South America in terms of drilling performance and safety standards, working for major oil companies like **Petrobras, Repsol, YPF, Chevron, PDVSA, ENI, SAUDI ARAMCO**, etc. These results have allowed the constant expansion of our rigs. We are able to provide a fully integrated service of rig management, rig customization, rig engineering, and design, technical assistance, maintenance with in-house spare parts.

Technical features

RIG FLEET	HH102	HH220	HH300	MR5000
Max Hook Load Capacity	220,000 lbs	440,000 lbs	600,000 lbs	220,000 lbs
Drilling Depth	5500 ft	12000 ft	17000 ft	5500 ft
Mud Pumps	2x1000 HP	3x1000 HP	2x1600 HP	2x700 HP
Top Drive Max Torque	26000 lbs/ft	26000 lbs/ft	32000 lbs/ft	26000 lbs/ft
Clearance for BOP Stack	17.06 ft	17.70 ft	22 ft	17 ft

... from the Desert of Perù
to the 4600 m.s.l.
in the Chilean Andes





Petreven policy of HEALTH Industrial SAFETY, ENVIRONMENT and QUALITY (HSEQ)

Petreven Management is responsible for the Health and Safety of personnel involved in the operations as well as for the environmental protection.

It is Petreven Policy to protect its employees from exposure to any hazards in the workplace through the implementation and continuous improvement of engineering and administrative controls. The use of Personal Protective Equipment is mandatory for all personnel according to their job designation.

Prevention and protection are Petreven priorities as people are considered the most valuable resource for the success of our business.



Health, Safety & Environmental Performance

The principle of continuous improvement is driving Petreven strategy towards excellence and long term business success.

Petreven Hseq Management System comprises performance monitoring and improvement through the analysis of Lagging and Leading indicators. The lagging indicators provide statistical data on injuries trends, allowing the identification of critical improvement areas for incidents prevention and reduction.

Petreven has also established leading indicators of performance which provide a measurement of proactivity in terms of management commitment, training, HSE awareness and inspections. Petreven contributed improving the quality of life of local communities thanks to its social and health programs.

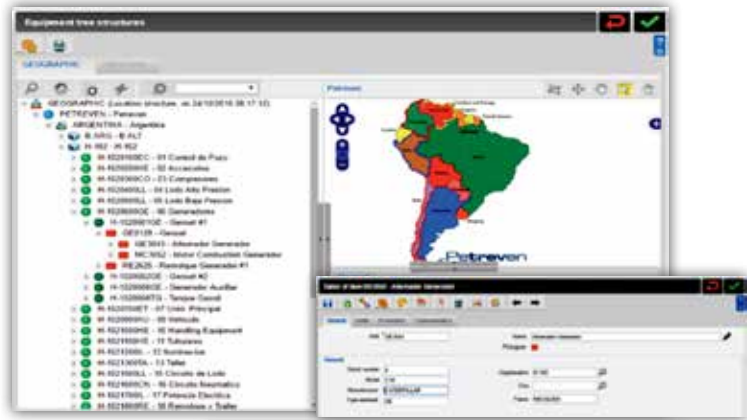


Preventive & corrective maintenance

Maintenance activities on main and auxiliary equipment of Petreven Drilling and Work Over rigs, are developed with attention to reduce hazardous conditions for personnel and during downtime.

Petreven performs and updates a rigorous preventive and corrective maintenance plan where routines are defined according to the manufacturer's recommendations, the experience of our staff and the operational context of each machine.

Preventive measures are scheduled from general maintenance program by a software assistance. Maintenance staff performs the tasks indicated in the routine. The routine form is registered into the Petreven database. The record of corrective maintenance, operating parameters and faults of each element is a fundamental part of the performance statistics and cause analysis of incidents.



Failure identification and resolution

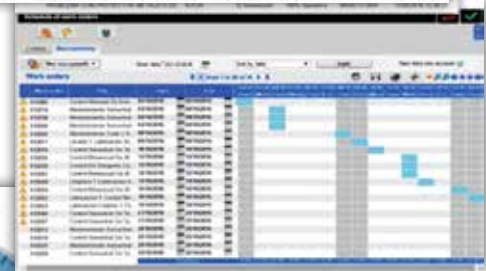


Preventive maintenance tasks planning and execution



Historic events registration in the maintenance system for further analysis

ID	DESCRIPCION	FECHA	OPERARIO	ESTADO	TIPO	UBICACION	VALOR
100001	Revisión de aceite en el motor	15/01/2010	J. Gomez	Completado	Mantenimiento	Peru	1.000
100002	Reparación de la bomba de agua	16/01/2010	M. Lopez	Pendiente	Reparación	Venezuela	2.500
100003	Revisión de los niveles de agua	17/01/2010	L. Perez	Completado	Revisión	Colombia	0.500
100004	Revisión de los niveles de aceite	18/01/2010	P. Garcia	Completado	Revisión	Argentina	0.500



Integrated Management System

Our working method based on integrated management system, continuous training and effective communication is focused on the improvement of prevention of accidents and environmental pollution control. Petreven has the fundamental commitment to develop its activities using procedures that ensure the quality of its products and services, the safety and the health of its employees, contractors and clients, and the environmental protection.

Petreven commenced in 2002 the development of an Integrated Management System to improve, organize and systematize its processes. In 2009 Petreven approved the pursuit of the certification for its Integrated Management System (IMS) according to the international Standards OHSAS 18001:2007, ISO 14001:2004 and ISO 9001:2008. In 2010 operative branches of Petreven in Peru, Venezuela, Colombia and Argentina obtained the certification of the IMS from the international certification body DNV (Det Norske Veritas). This success was obtained through continuous commitment, dedication and collaboration of all Petreven staff.





petreven.com

info@petreven.com

